

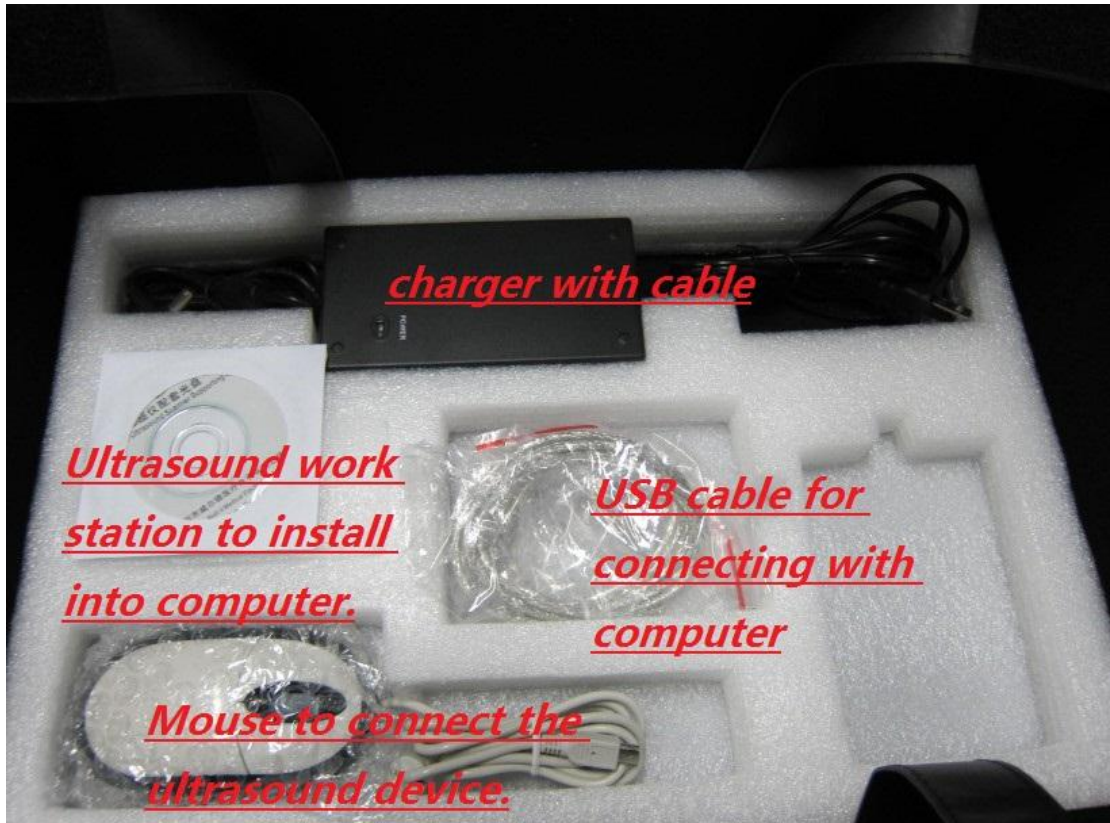


**Certificate
documents and
user manual**

Suitcase

Gel

**Device
With one battery inside.
(you can take it out for
charging)**



charger with cable

**Ultrasound work
station to install
into computer.**

**USB cable for
connecting with
computer**

**Mouse to connect the
ultrasound device.**



Customers can choose anyone of the below probe to replace the above mentioned Convex probe as the standard configuration. (WED-3000V comes with any one of the probes according to customers' choice)

